



## ArborSpace

*A classroom that doesn't cost the Earth...*

### LowC Communities Ltd

Lodge Farm, Aunby, Stamford, Lincolnshire, PE9 4EE, United Kingdom.

T. +44 (0)1778 590 074 | [info@lowc.co.uk](mailto:info@lowc.co.uk) | [www.lowc.co.uk](http://www.lowc.co.uk)

## ArborSpace

*ArborSpace is a low-cost, environmentally-friendly classroom solution created by the low-carbon building specialist LowC.*

Solving the well-known problem experienced throughout the UK's educational sector, it offers the perfect alternative to the traditional modular 'portable cabin' which has plagued car parks and playgrounds for decades.

The ArborSpace solution is not only more energy efficient than its portable cabin rival, it also creates a better educational environment and it also incorporates additional benefits such as WC facilities and an entrance lobby.

### Features and Benefits

There are a number of features and benefits offered by ArborSpace:

- Permanent structure for less than the price of a 'portable cabin'.
- Constructed from sustainable materials.
- Highly insulated with low running costs - including heat-recovery ventilation system.
- Range of sizes available to suit every application.
- Can integrate renewable energy technologies such as solar panels.
- 25-year design-life.
- DDA-compliant design.



### Quick and Simple Process

The whole process takes around 5-6 weeks from receipt of order to the handover of the completed classroom.



LowC's planning and construction team will take over every aspect of the project, including any planning applications, building regulations, utility connections and site security to protect the health and wellbeing of staff and students during the construction process.

### Tailor-Made or Off-the-Peg

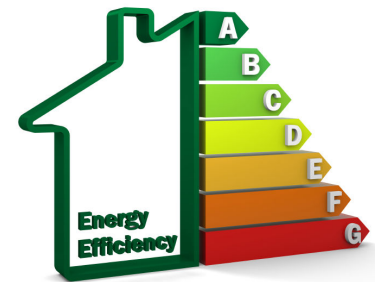
Although LowC has developed a standard range of sizes and layouts, we can accommodate any requirements for layout, including the integration of all teaching aids, furniture, fixtures and fittings.

### Quiet and Energy Efficient

With very-high levels of insulation fitted to the floor, walls and roof structure, the ArborSpace classroom offers exceptional levels of energy efficiency – keeping running costs to an absolute minimum.

What's more, its solid, insulated construction cuts down on echo and keeps out noise caused by rain – something that users of traditional 'portable cabins' will be all too familiar with.

All of these factors help to create a much better overall learning environment for its occupants.



### Flexible Procurement Options

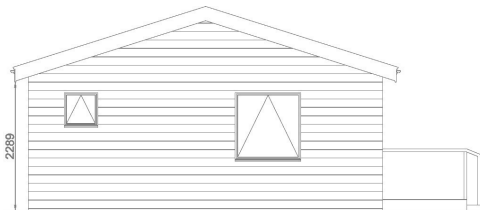
From a straightforward capital purchase, through to flexible, long-term leasing arrangements.



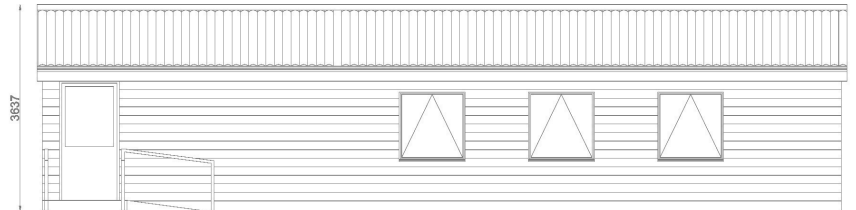
### Typical Layout / Configuration

Please find below, a sample layout and configuration for an ArborSpace classroom.  
Please contact us for further information.

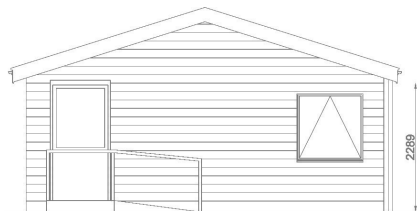
| NOT TO SCALE |



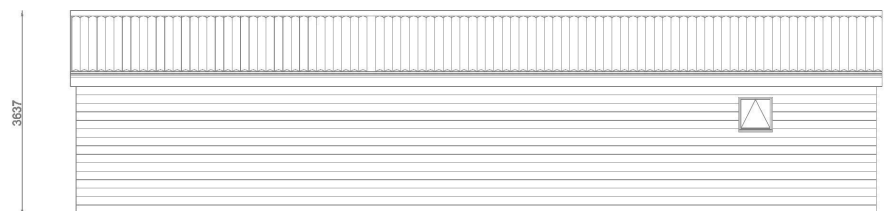
South Elevation



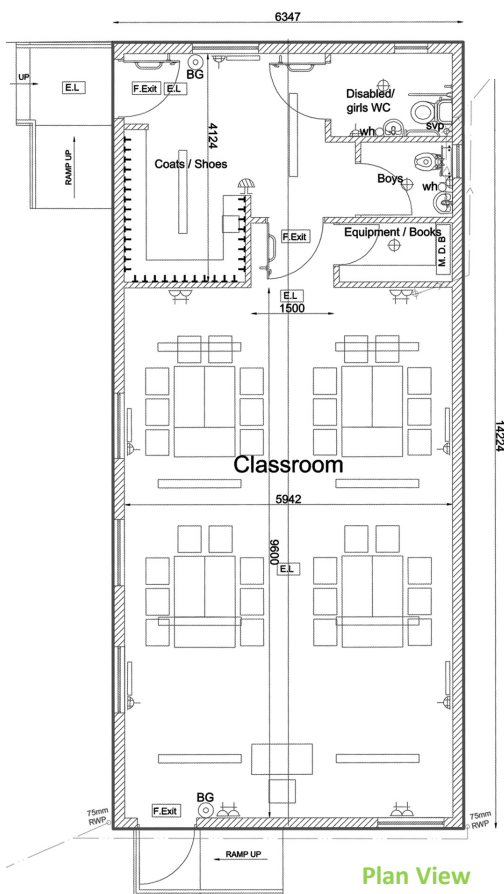
East Elevation



North Elevation



West Elevation



Plan View



### Find Out More

To find out more about ArborSpace and how it can help provide the ideal classroom space for your school, nursery or college please contact LowC on telephone 01778 590 074 or email [info@lowc.co.uk](mailto:info@lowc.co.uk)



LowC is proud to be a delivery partner for  
Bedfordshire East Schools Trust –  
[www.best-schools.org.uk](http://www.best-schools.org.uk)

*LowC has the single mission to make low-carbon communities happen. With expertise spanning building physics, low-carbon design, construction and renewable energy supply solutions, LowC can guide clients seamlessly through design, implementation and operation of renewable energy infrastructure.*

LowC works with developers, property owners, private investors and government bodies across all sectors and functions. Offering four core business areas: consulting, technologies, construction and energy services.

To find out how LowC can help reduce both your costs and carbon emissions, please telephone 01778 590 074, email [info@lowc.co.uk](mailto:info@lowc.co.uk) or visit the website [www.lowc.co.uk](http://www.lowc.co.uk)